

turnaroundtalk



Turnaround: 'Robust Surrogate Parenting'

The organisation aims to support young people to take control of their lives and behaviours by adopting an approach of robust surrogate parenting.

Put simply this means that we will attempt to be big and bold enough to contain their anger and frustration, strive to encourage their hopes and dreams and ultimately encourage the young person to take positive control. Where we fail to contain the anger and frustration we will take all steps needed to keep young people and staff safe. When the situation has calmed we are keen to learn and move on.

We believe in the therapeutic benefits of the outdoors, having energetic fun, being fully human and honest, humour that doesn't demean others, challenging assumptions and stereotypes, and not hiding behind professional language.

Turnaround is proud to offer young people the chance to experience the beauty of the Peak

District and Staffordshire moorlands, we make no apology for the fact that our homes are based in these beautiful remote places and celebrate the therapeutic benefits of waking to birdsong and the mooing of cows!

We as an organisation recognise and celebrate the fact that we as adults are on a journey, we are constantly looking to improve and change. We want young people to realise that the chaos they may experience can be harnessed and change can be positive and rewarding.

Our customers face constant economic and strategic challenges within children's services. We aim to be a solution-focussed partner, problem solving where possible and striving to be accountable for the work that we do.

Turnaround Specialisms:

- Challenging behaviour
- Criminal behaviour
- Destruction of property
- Exclusion from school
- Burglary/theft
- Absconding
- ADHD
- Bullying
- Attachment disorders
- Fire setting
- Inappropriate sexualised behaviour
- Victims of abuse
- Self harm
- Suicide threats
- Trauma
- Vulnerability to sexual exploitation
- Substance abuse

turnaroundtalk

Other News...

New!

Turnaround now has a new "through care" model on offer to placement authorities:

Crisis intervention: Orchard Farm **Medium to long term:** Sunnydale Farm

Opening soon... Long term: The Old Schoolhouse with additional post 16 independence facilities

Crisis intervention:

Turnaround have a specialised staff team dedicated to using the outdoors as therapeutic intervention; activities are tailor made to each youngster in order to stabilise negative behaviour. These activities are linked into our education programme and we use AQA unit awards and ASDAN to accredit individual achievements.

Our AALS license enables us to provide activities such as: hill walking; gorge walking; indoor and outdoor climbing and abseiling ; mountain biking; kayaking; canoeing

It is our aim to stabilise negative behaviours; enabling a young person to understand how to deal with and understand their feelings within a peaceful, calm and homely environment. Thereby preparing the young person to be able to access more formal educational experiences and independent living skills.

Medium to long term:

Once a young person has stabilised their behaviour they have the opportunity of a planned move to one of our medium to long term homes to access more formal education- at our registered independent school or at a local mainstream school or college or other educational placement. We have forged excellent links with local schools and colleges in Buxton, Leek, Tameside, Burton and Stoke.

Young people learn skills that are differentiated according to individual needs and Key Stage appropriate; we use Trinity college Arts awards, Bronze and Silver levels ASDAN Bronze and Silver at Key Stages 2 and 3 and progress to COPE usually at Key Stage 4 and 5 (all qualifications are graded between GCSE equivalent grades F to A*); additionally young people are able to access specific course work materials for study at GCSE foundation and higher levels.

Respite:

We continue to offer our respite services to placement authorities. Please contact John Stamp for further information pertaining to our provision and much reduced fees.

Email: john@turnaround-care.co.uk Call: 07917 157618

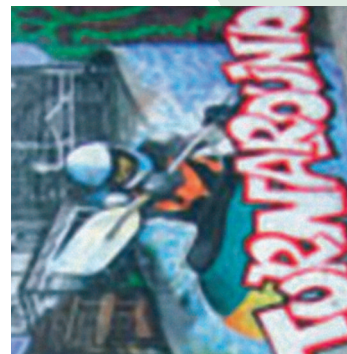
We seek to provide a professional service and welcome positive and constructive feedback from placement authorities.

We seek to provide a professional service and welcome positive and constructive feedback from placement authorities. Please let us know when we are doing well and what we can do to improve our provision for you in the future.

Contact Sally Millman-Jones with your feedback:
sally@turnaround-care.co.uk 01298 70655



turnaround
inspiring the next generation



Turnaround Placements

We are a small, closely run organisation.

We are very thorough when taking an emergency or planned referral and do not accept children if we feel we cannot assist in offering them a positive experience.

We therefore insist on our recently revised referral pack being completed before a definite decision is made.

For more information on making a referral please call us on 01298 70655.

More information can be found on our website at turnaround-care.co.uk.